



National Institute for Research and Development in Construction, Urban Planning and Sustainable Spatial Development “URBAN-INCERC”, Bucharest, Romania

ECBR – EUROPEAN CENTER FOR BUILDINGS REHABILITATION

REPORT ON ECBR PROJECT ACTIVITIES IN 2018.

ECBR PROJECT IN 2019

Dr. Eng. Emil - Sever Georgescu
DIRECTOR OF ECBR,

November 2018

ANNEXES TO ECBR REPORT

ANNEX 2 - Annex 2.1

**IMAGES OF HOUSES AND VULNERABILITY ELEMENTS FROM
NEIGHBORHOOD PLACE ALBA IULIA – DRISTOR, SOUTH-EAST OF
BUCHAREST AND OF SHORT TIME FREE-FIELD SEMINARS DIRECTLY WITH
CITIZENS**



House of pre-1940 generation, duplex type, with damaged chimneys



Range of pre-1940 houses, with recent rehabilitation



Range of pre-1940 houses, with recent rehabilitation including a second story for living



Discussion of Dr. Eng. Emil Sever Georgescu, Director ECBR with a lady owner of a pre-1940 house, slightly damaged in 1977 earthquake, with recent rehabilitation works, providing also an ECBR leaflet



Discussion of Assoc. Prof. Dr. Claudiu Sorin Dragomir, Secretary General of ECBR with a lady owner a small house with cracks at socket, about the possibility to rehabilitate and add one attic as living space, delivering an ECBR leaflet



Discussion of Dr. Eng. Emil Sever Georgescu, Director ECBR with owner a small house with cracks at socket about the possibility to rehabilitate and add one attic as living space, delivering an ECBR leaflet

ANNEX 2 - Annex 2.2

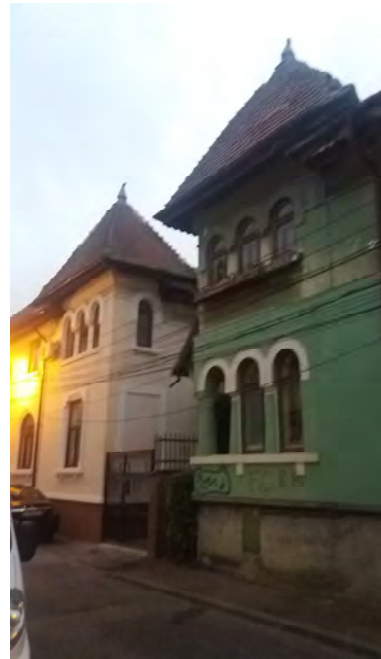
**IMAGES OF HOUSES AND VULNERABILITY ELEMENTS FROM NEIGHBORHOOD
MIRCEA VULCANESCU – STEFAN FURTUNA ENTRANCE, CENTER-WEST OF
BUCHAREST AND OF SHORT TIME FREE-FIELD SEMINARS DIRECTLY WITH
CITIZENS**



Mircea Vulcanescu main street - Pre-1940 building with decayed gable wall



Pre-1940 building in good condition at corner of Mircea Vulcanescu main street with Stefan Furtuna Entrance and old buildings along of main street with different threats for citizens in case of earthquake



Group of similar two story manors of Neo-Romanian style on Stefan Furtuna Entrance, seen from two opposite directions. Although the buildings looks sturdy, the heavy tiles roof is decayed and some top ornaments may collapse



Two story manors of Neo-Romanian style on Stefan Furtuna Entrance



Discussion and training based on ECBR leaflet with a lady owner of St. Furtuna Entrance about earthquake preparedness in her house by Assoc. Prof. Dr. Claudiu Sorin Dragomir, Secretary General of ECBR



Discussion between two ladies in St. Furtuna Entrance based on ECBR leaflet about earthquake preparedness in their house